

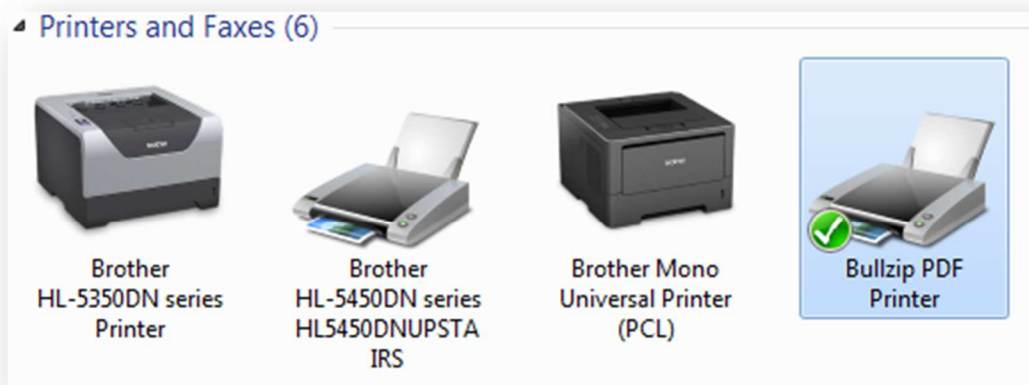
## Printing in Location Publisher

If you plan to print in A3 using location publisher you must first have your default printer set to a printer that supports A3 printing. The print settings will always default to the printers default settings as set in the control panel under devices and printers so that the user should always check the print layout i.e. Portrait or Landscape on the browsers print preview window before printing. If you are using a dedicated map printer then it is a good idea to set the default print properties on the printer from the control panel. Using Location Publishers print preview option displays the map on the screen only with the selected orientation and page size, this has no effect on the browsers print settings.

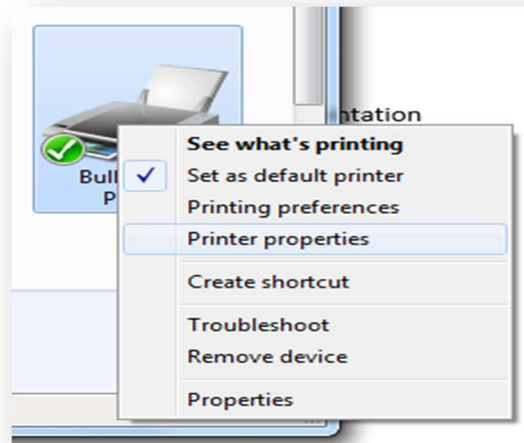
### Example A3 printing scenario

We have a dedicated A3 map printer that we want to use to print maps in Landscape orientation (Windows 7 Environment)

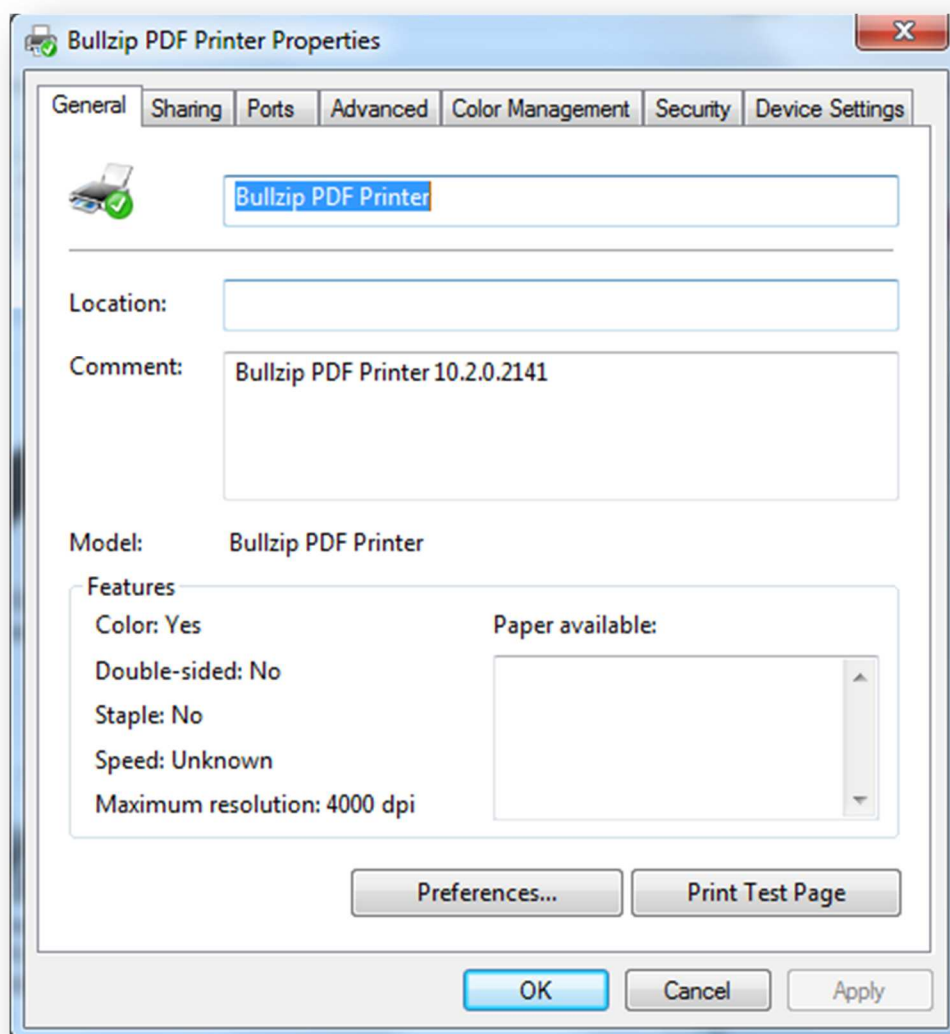
1. Click on the start -> Control Panel -> Devices and Printers. This will bring up a list of printers your machine currently has access to.



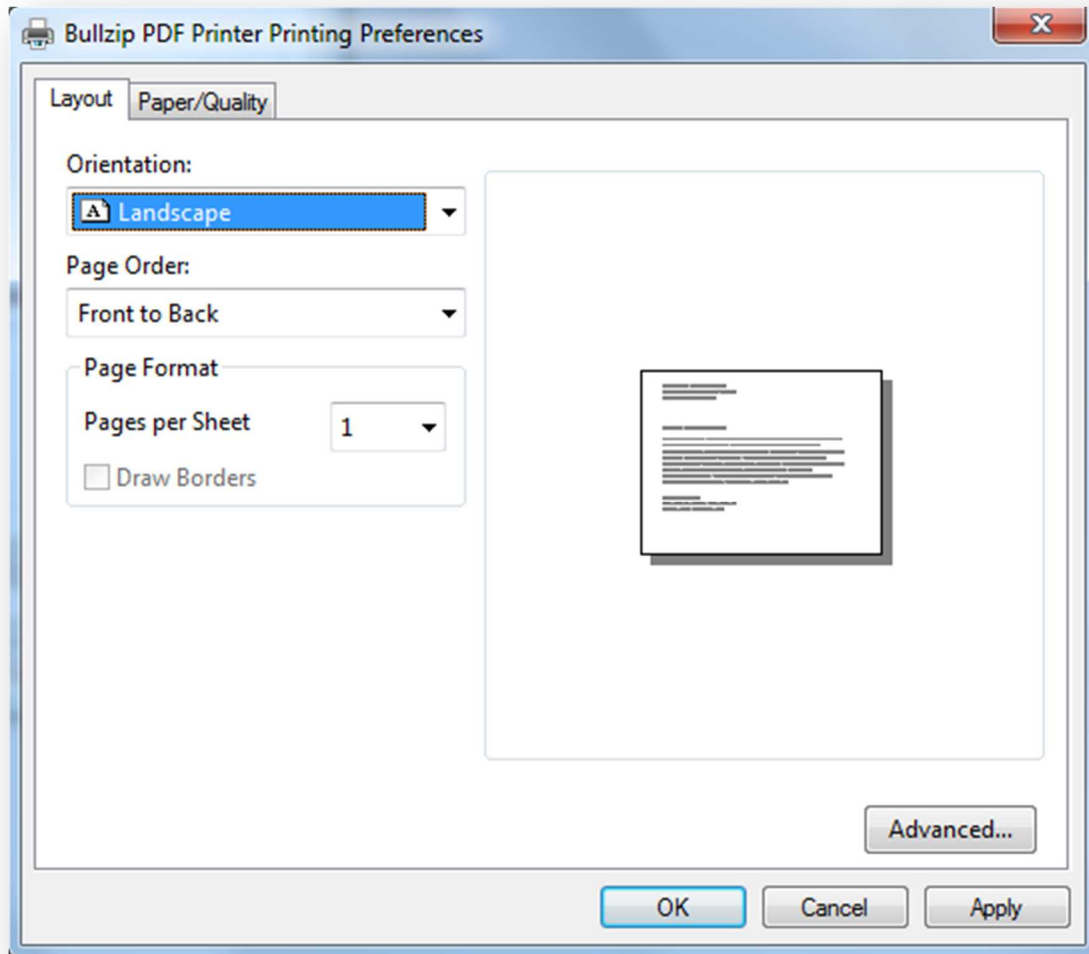
2. Right click on your A3 printer and select set as default printer. This option will then be denoted with a tick to indicate that is selected.



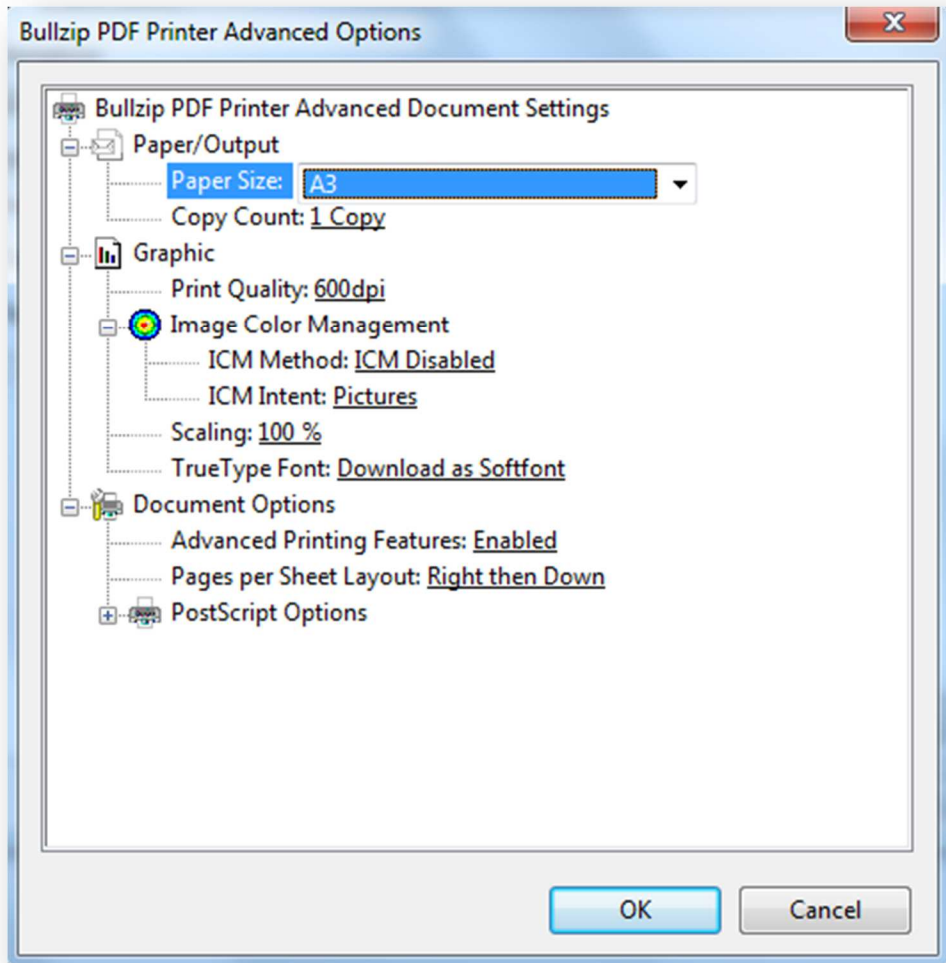
3. Right click on your A3 printer again and select Printer Properties. This will bring up the printers property dialog box. Please note, the properties of this dialog are dependent on the printer make and model.



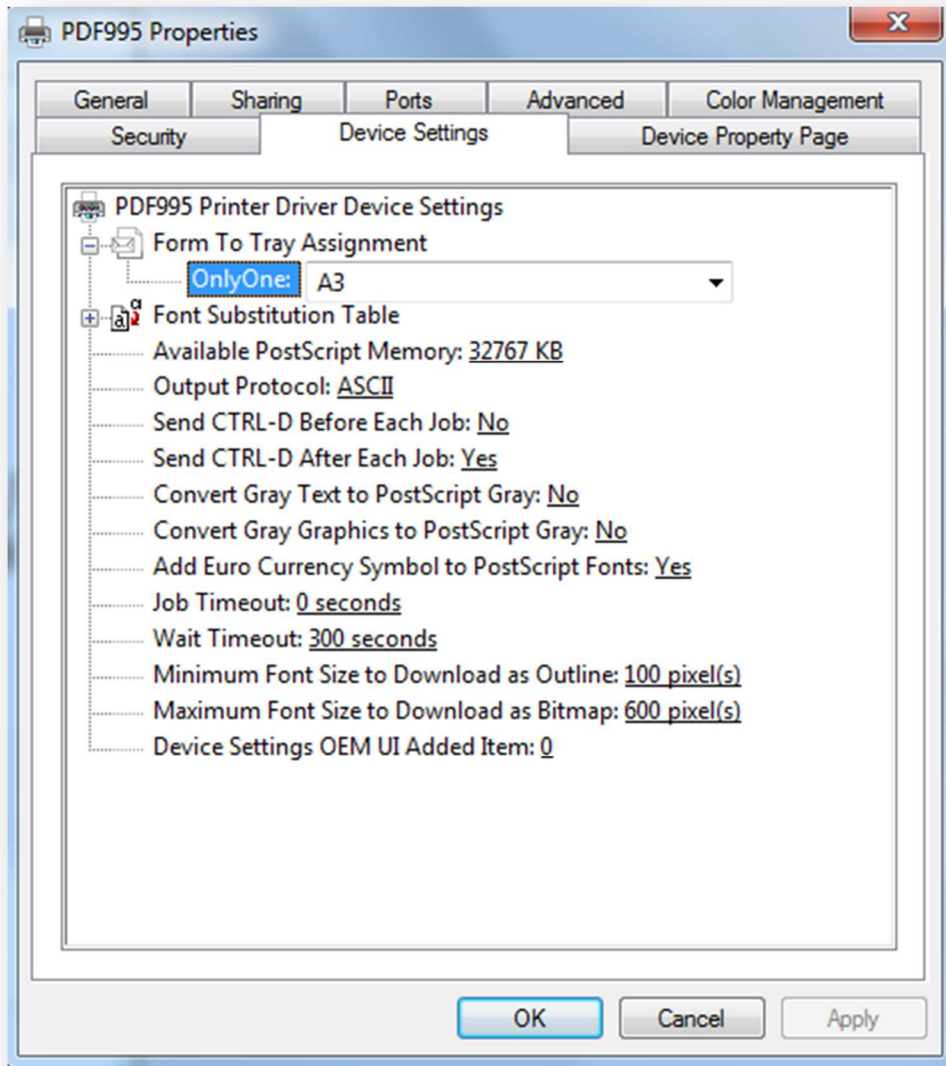
4. Click the Preferences Button. This will bring up the print preferences dialog.



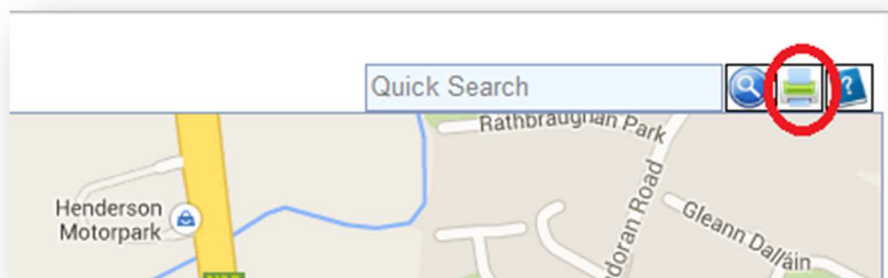
5. On the print preferences dialog change the orientation to Landscape and click the Advanced button. This will bring up more options where we can set the paper size.



6. On the Advanced Menu Change the Paper size to A3 and click Ok to close the Advanced options.
7. Click Ok to close the Print Preferences
8. On the properties dialog it may be necessary to click on the device settings tab to adjust the paper size here also. This is dependent on the printer.



9. Click Ok to close the print properties dialog. Your default printer and settings are now configured.
10. Launch Location Publisher Client
11. Locate an area of interest that you want to print and zoom to the appropriate view level
12. Click on the print preview icon in the top right corner of the screen. This will bring up the Location Publisher print configuration dialog.



- Print Configuration

General Settings

Paper size:

A3

Orientation:

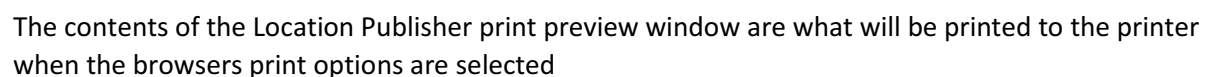
LandScape

Scale:

1:6771

Created By:

Notes:



In internet explorer

1. Click on File(Alt +F) and print preview. This will launch the browsers print preview dialog
2. Ensure the Page orientation is set to Landscape and the print area is set to 100%. The page size (A3 will be selected by default as we originally set this in the control panel before starting Location Publisher)
3. Click Print

Please note that if your printer is set by default to use A4 and in location publisher you attempt to print to A3 you will get unexpected results.